



Winter 2020

Happy New Year to All! With a new year comes new beginnings and new opportunities. I think we can all agree that 2020 was not what we thought or planned it would be. LCS has however continued to make our mission happen every day despite all that has happened in 2020. Staff and participants have pushed themselves to learn new things like Zoom and find creative ways to stay engaged in a now socially distant and virtual world. LCS has truly shown that "potential is limitless." A new year also brings about new inspirations, dreams, and goals for everyone. At LCS, we are committed to helping those we serve reach those inspirations, dreams, and goals.

With new beginnings and new opportunities also comes change. LCS has some exciting changes that have occurred at the beginning of 2021. On a sad note, we had to say goodbye to Mary Beth Popchock who retired at the end of 2020. LCS would like to thank Mary Beth who did an outstanding job of leading LCS for the past 10+ years. I am excited for my new position as Executive Director and look forward to continuing to move LCS forward. LCS would also like to congratulate Brittany Brown for her promotion to Director of Community Services and Melissa Vandehei for her promotion to Community Services Manager.

I just want to leave you with a few quotes to think about, and I want you all to know that I am planning on bringing my ALL into the New Year at LCS!

"**What the new year brings** to you **will** depend a great deal on what you **bring** to the **new year**." "**Year's** end is neither an end nor a beginning but a going on." "**Last year's** words belong to last **year's** language. And next **year's** words await another voice."

*LCS' mission is to provide training and community engagement for youth and adults of varying abilities to enhance their self-esteem and quality of life.*

"POTENTIAL IS LIMITLESS"

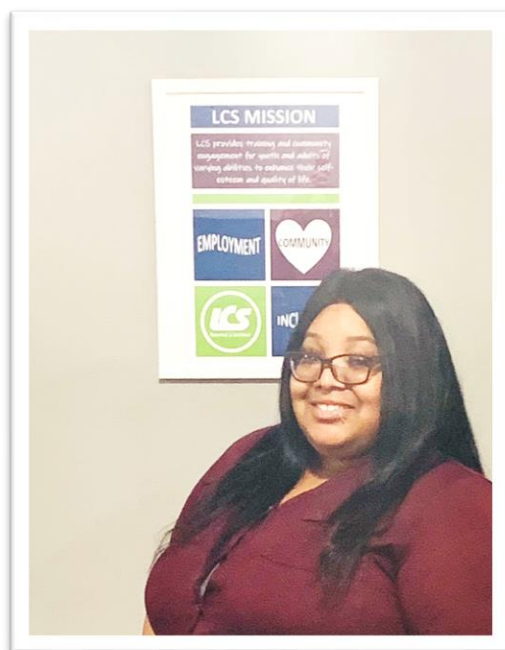
-Alison Hoffman, Executive Director

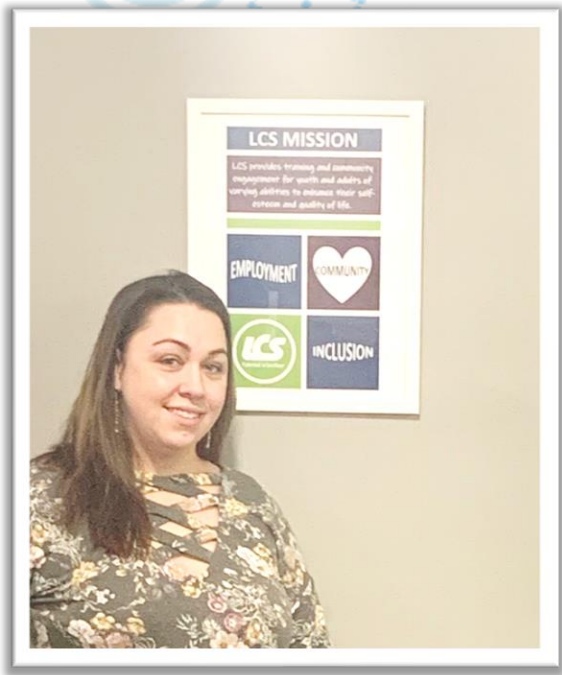
# Familiar Faces Take on New Roles at LCS!



Alison has been with LCS for nine years and has both professional and personal experience assisting individuals with disabilities reach their full potential and achieve their personal goals. She has a BS from the University of Wisconsin-Parkside, an MS from Concordia University in Mequon Wisconsin, and holds her CESP (Certified Employment Support Professional certificate). Alison has a passion for seeing the potential in everyone she works with and truly believes that everyone, regardless of disability, should be a part of their community. During Alison's time at LCS, she has been an integral part in helping LCS focus on community employment and move away from traditional prevocational services and traditional day services by implementing innovative programs and services for LCS, while ensuring that the mission goals and strategic and financial objectives are met. Alison continues to focus on helping individuals see that their potential is limitless and move forward LCS's mission of providing training and community engagement for youth and adults of varying abilities to enhance their self-esteem and quality of life.

After graduating from the University of Wisconsin – Parkside with a bachelors in Sociology, Brittany joined LCS in late 2015. Beginning as a Vocational Assistant, she spent her time helping individuals in Explore with career exploration and setting personalized goals. Within a year, she transitioned to working as a Job Coach where she was responsible for assisting individuals with maintaining community integrated employment. After briefly leaving LCS to enhance her skillset, Brittany returned to LCS as the Community Service Manager where she focused on re-vamping the Community Service programs, Connect and Explore, to ensure individuals in both programs were exposed to an abundance of new experiences and career exploration opportunities. Entering 2021 as the Director of Community Services, her mission is to continue building a strong team committed to exposing individuals receiving LCS services to community integration and encouraging them to reach their goals. In her spare time, she enjoys traveling with her husband and spending time with her fur babies – Bentley, Chevy, and Brooklyn.





Melissa began her expedition at LCS in 2016 where she started out as a Community Skills Coach. She spent three years working towards finding meaningful community experiences for Connect individuals before stepping into the role as Community Service Case Manager. From there, she spent two years continuing to grow and look for new ways to help individuals create personal goals. Now as she steps into the position as Community Service Manager, she has made it her mission to work with staff to ensure participants are provided the support, skills, and encouragement to lead fuller lives with community involvement.

*Congratulations*



# LCS Says Farewell to Mary Beth!

Last month, on December 10, 2020, LCS had a surprise retirement party for the former Executive Director, Mary Beth Popchock, who retired at the end of 2020. During an all staff meeting, a video was aired of everyone saying their goodbyes to Mary Beth, and she was presented with an engraved trophy vase with flowers in it as a thank you gift from LCS for her dedication and hard work throughout her time at LCS.

Congratulations on your retirement, Mary Beth!



Pictured above is Mary Beth (on the left) and Michelle (on the right) displaying a gift basket that Michelle made for Mary Beth. Pictured below is the trophy vase Mary Beth received from LCS.

The engraving says, "May you be proud of the work you've done, the person you are, and the difference you have made. Thank you for your dedication and service to LCS."

In the picture above, Mary Beth is holding a piece of art created by artist Crystal Neubauer as a going away present from LCS and the LCS Board of Directors. The picture Crystal created is a collage that contains various memories from Mary Beth's career at LCS. Mary Beth loved her picture and was eager to hang it up in her home.

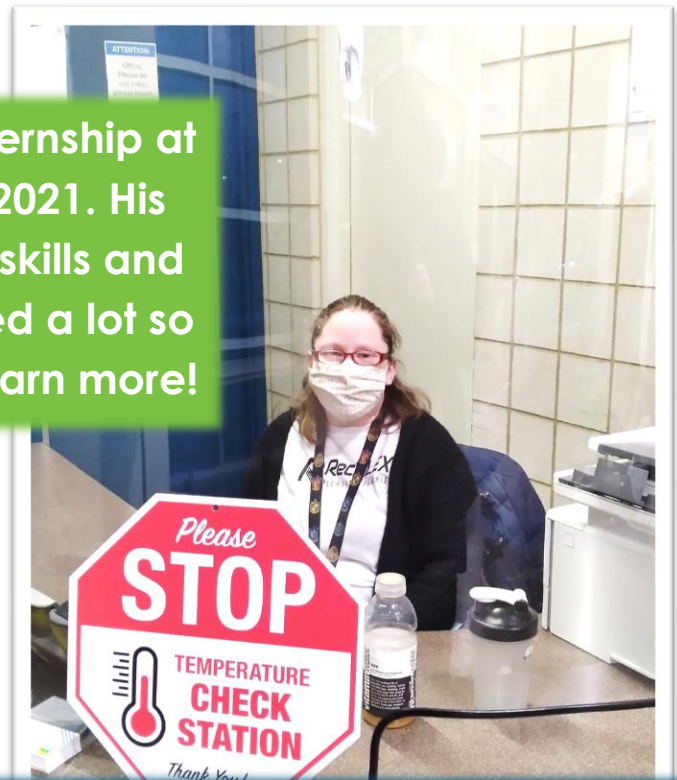
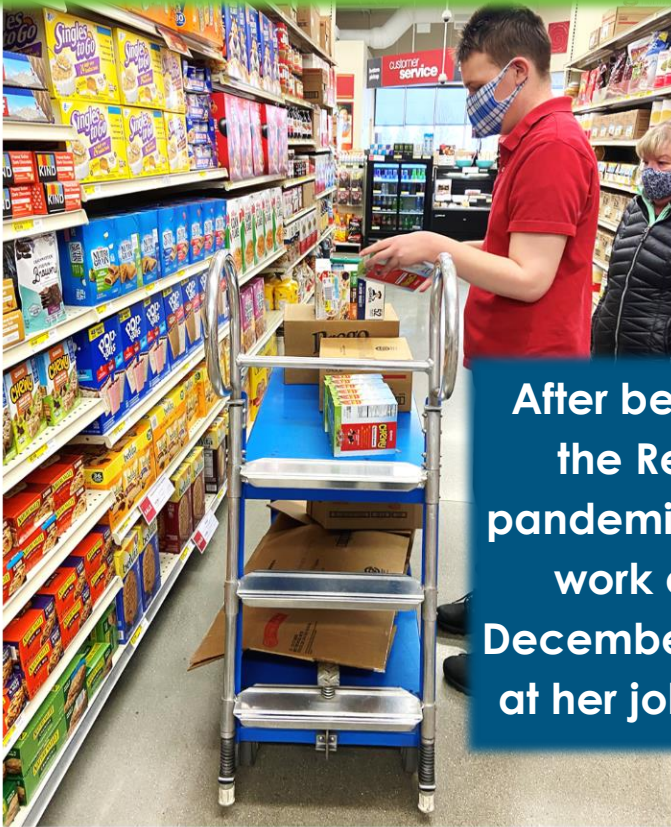




# LCS Success Stories!

All stories were made possible through LCS' partnership with the Division of Vocational Rehabilitation (DVR).

Steven (pictured below) started an internship at Gordon Food Service on January 6, 2021. His position at GFS is helping him to gain skills and experience in Stocking. He has learned a lot so far, and he is excited to continue to learn more!



After being gone since March 18, 2020, when the Recplex closed due to the COVID-19 pandemic, Alysha (pictured above) returned to work at the RecPlex in Pleasant Prairie on December 10, 2020. Alysha is happy to be back at her job and working again at the front desk.

## LCS Classes and Trainings Help Participants to Further Develop Their Job and Life Skills!

Since the start of the pandemic in 2020, LCS has relied on doing virtual classes and trainings, as well as socially distanced classes and trainings at LCS. LCS Connect and LCS Explore provide participants with new learning experiences and job skill development through these virtual classes and trainings. Each day brings a new lesson that will help participants once they are able to get back out in the community more.



Below is a picture of Steven who participated in a one-on-one lesson from the Marketing Coordinator on how to do Facebook posts as a marketing professional for a business.

The picture above features some participants participating in a Zoom “Life Hacks” class that involves DIY projects for everyday items you can find around your house.







# Important Dates to Remember for 2021!

## Upcoming Holidays/Dates LCS is Closed...

Good Friday – April 2, 2021

Memorial Day – May 31, 2021

Independence Day – July 5, 2021

Labor Day – September 6, 2021

Staff Volunteer Day – September 17, 2021

Thanksgiving – **November 25, 2021** and **November 26, 2021**

Christmas – **December 24, 2021** and **December 27, 2021**

New Year's – **December 31, 2021** and **January 3, 2022**



## Executive Team

**Executive Director**, Alison Hoffman

**Director of Community Services**, Brittany Brown

**Director of Human Resources**, Carol Ratliff

**Director of Operations**, Michael Snodgrass

**Marketing and Administrative Coordinator**, Alison Howen

**Lakeside Curative Services**  
2503 Lincolnwood Court  
Racine, WI 53403  
[www.lcsr Racine.org](http://www.lcsr Racine.org)



## 2021 LCS Board of Directors

### Officers

#### President

Tara Panasewicz  
United Way of Kenosha  
County

#### Vice President

Alicia Schmitz  
CCB

#### Treasurer

Amanda Cupertino  
US Bank

#### Secretary

Debra Karp  
UW Parkside

### Members

Barry Fries  
Johnson Financial Services

Cydean Jennings  
Gateway Technical  
College

Herbert Katt  
Katt Construction

Josh Covelli  
RecPlex

Sandy Herrera  
Kohler Company

Victor Frasher  
Educators Credit Union

### Members Emeritus

Brad Pettibone Mavis Rohling

Bruce Battersby Mike Haubrich

Celeste Henken Myles Mullikin

Ed Furey Ron Lemerond

John Wargo Sandy Herrera

Kelly Mould Scott Frey

Sophie Clay

### Are you an Amazon Shopper?

You can donate to LCS just by shopping on Amazon. Shop using our unique Amazon Smile link at: <https://smile.amazon.com/ch/39-0810547>, and 0.5% of the proceeds on eligible purchases will be donated to LCS!

