

# 2019 Quarterly Newsletter



Dear Friends of LCS,

Welcome to LCS' first newsletter of 2019. I hope 2019 will be a fantastic year for everyone. LCS has started the year once again with plans for many good things that will complement our mission of providing training and community engagements for youth and adults with varying abilities to enhance their self-esteem and quality of life. Please follow us on Facebook to see the great opportunities and the community focused outcomes that LCS will offer its participants as the year unfolds. LCS believes that potential is limitless and strives to make connections for participants in the community as the driving force for the services we provide.

Best Regards,

Mary Beth Popchock, Executive Director

*LCS' mission is to provide training and community engagement for youth and adults of varying abilities to enhance their self-esteem and quality of life.*

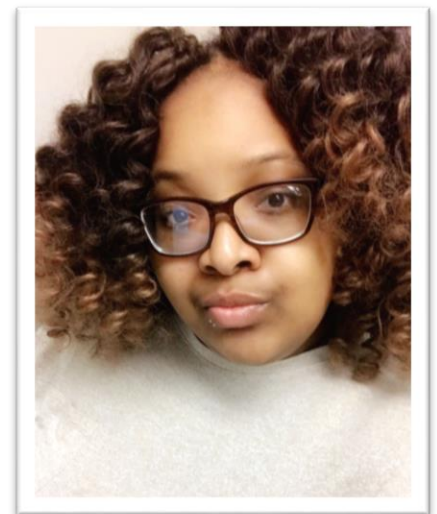
*"Potential is limitless"*

## Welcome to the LCS Team!



Alison Howen was hired by LCS in February of 2019 for the Marketing and Administrative Coordinator position. What Alison loves most about her new position is getting to utilize her education in creative writing to help others. She also loves the welcoming environment that LCS provides for everyone that steps through the door. With her new position, she hopes to help LCS gain more recognition within the community.

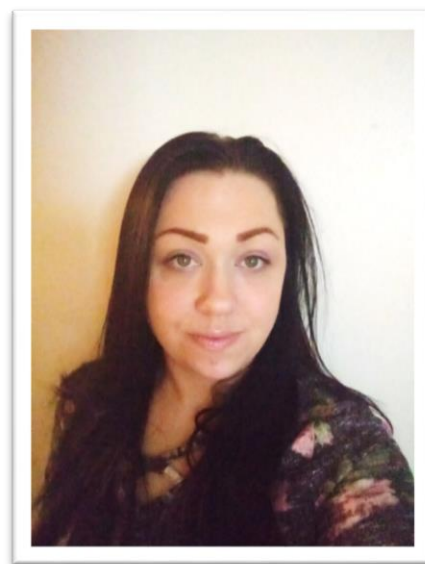
Brittany Brown was recently hired by LCS as the new Community Services Program Manager. She worked at LCS prior to her current position as a Vocational Assistant and then as a Community Support Coach. The thing she loves most about LCS is the welcoming atmosphere from the participants and staff. She also loves how dedicated the staff is to helping participants reach their individualized goals.





Sandra Lautenschlager was recently appointed the position of an Employment Specialist at LCS. Her favorite part of the job is the people she works with. Whether she's in the office typing up reports, discussing employment options with participants, or inquiring about employee needs at various companies, she enjoys how different each day is at LCS. In her free time, she loves gardening in her yard with her two dogs by her side to keep her company.

Melissa Vandehei recently changed positions at LCS from a Connect Community Coach to Community Services Case Manager. She has worked with individuals with varying disabilities for over 10 years, which includes assisted living, AFH's, and CBRF's. She is flexible and helps her co-workers in any way that she can, and she enjoys taking on new experiences and acclimates quickly. She is excited to continue helping others succeed.



## LCS Success Stories!

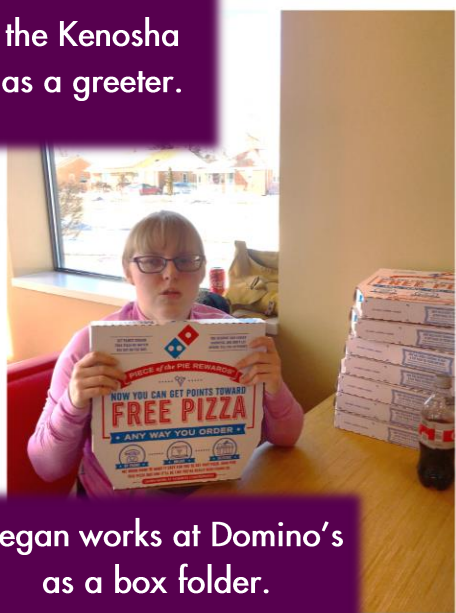


Jayne works at the Kenosha Public Museum as a greeter.

In honor of International Women's Day, which took place on March 8, 2019, we are featuring Jayne, Megan, Leigh, and Jenny who have all been successful in their line of work.



Leigh works as a server at the Corner Bakery Café.



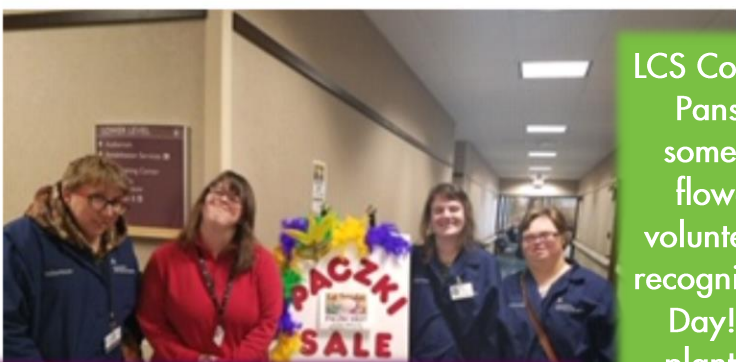
Megan works at Domino's as a box folder.



Jenny works at Andis Company where she engraves blades



## LCS Community Services Gives Back to the Community Where We Enjoy Sharing Our Time and Talents!



From left to right we have Lora, Lauren, Cynthia, and Angie standing in front of the Paczki Sale fundraiser sign at Ascension. Part of the proceeds from this fundraiser go to benefit Volunteers in Partnership of Ascension.

LCS Connect is busy in the greenhouse getting ready for Pansy Week. This year Connect has decided to do something different by hand delivering the beautiful flowers they have grown to the various community volunteer sites that we volunteer with. We also want to recognize all of our female friends the week of Mother's Day! Pictured below is Tony displaying some of the plants growing in the greenhouse. You can also see more of the plants we've grown so far in the picture featured in the middle of this page.



In this picture, Angie and Cynthia are assisting a customer with packing her newly bought paczki pastries baked by Larsen's Bakery.





## Executive Team

Executive Director, Mary Beth Popchock  
Director of LCS Services, Alison Hoffman  
Human Resources Director, Paula Albright  
Manager of Operations, Michael Snodgrass  
Marketing and Administrative Coordinator, Alison Howen

Lakeside Curative Services  
2503 Lincolnwood Court  
Racine, WI 53403  
[www.lcsracine.org](http://www.lcsracine.org)

## LCS Board of Directors

### Officers

**President**  
Tara Panasewicz  
United Way of Kenosha County

**Treasurer**  
Bruce Battersby  
Retired

**Secretary**  
Kelly Mould  
Johnson Bank

### Members

Amanda Cupertino  
US Bank

Debra Karp  
UW Parkside

Melvin Hargrove  
Pastor Zoe Ministries

Mike Haubrich  
Financial Service Group

Mike Steinborn  
Occucare

Myles Mullikin  
Retired

Sandy Herrera  
Kohler Company

Tim Geraghty  
Attorney

### Members Emeritus

Brad Pettibone

Celeste Henken

John Wargo

Mavis Rohling

Ron Lemerond

Scott Frey



## Are you an Amazon Shopper?

You can donate to LCS just by shopping on Amazon. Shop using our unique Amazon Smile link at <https://smile.amazon.com/ch/39-0810547>, and 0.5% of the proceeds on eligible purchases will be donated to LCS!

**amazon**smile  
You shop. Amazon gives.